



AZIMUT GRANDE

35 METRI

2020

€ 9,500,000 EX VAT

The Yacht



\*Catalog photo

The Yacht



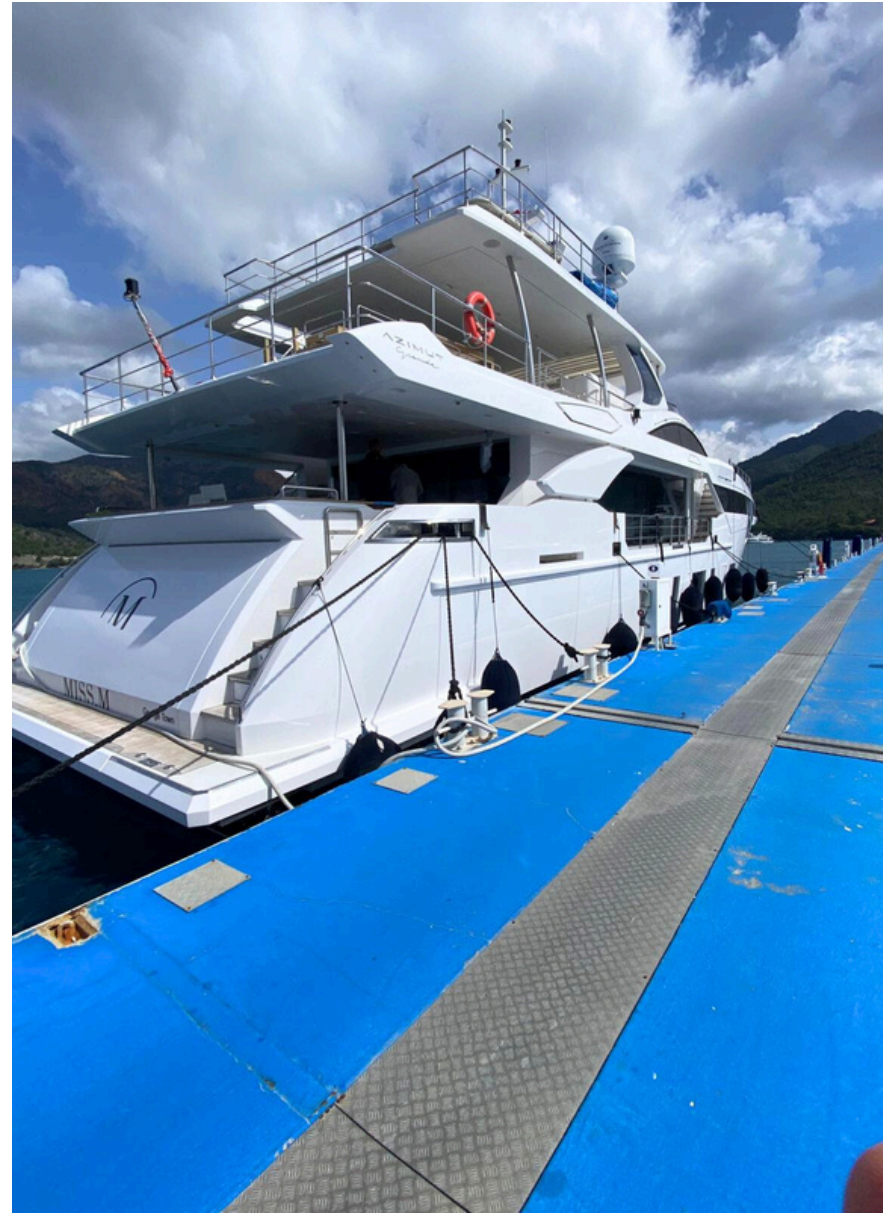
\*Catalog photo

The Yacht



\*Catalog photo

# The Yacht



Foredeck Lounge



\*Catalog photo

Beach area



\*Catalog photo

Beach area





Sundeck



\*Catalog photo

Sundeck



\*Catalog photo

Upper Deck



\*Catalog photo

Upper Deck

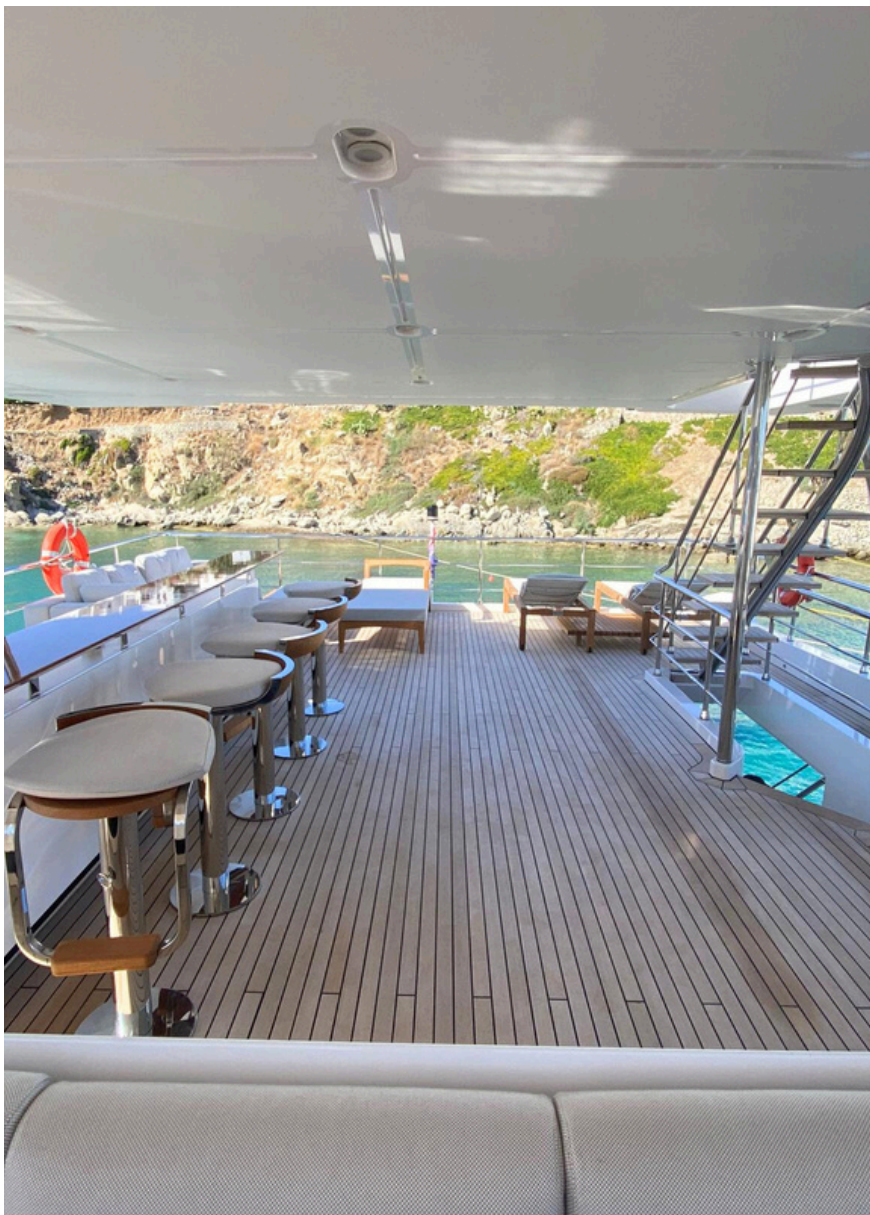


Upper Deck



\*Catalog photo

Upper Deck



Saloon



\*Catalog photo

Saloon



\*Catalog photo



Master cabin



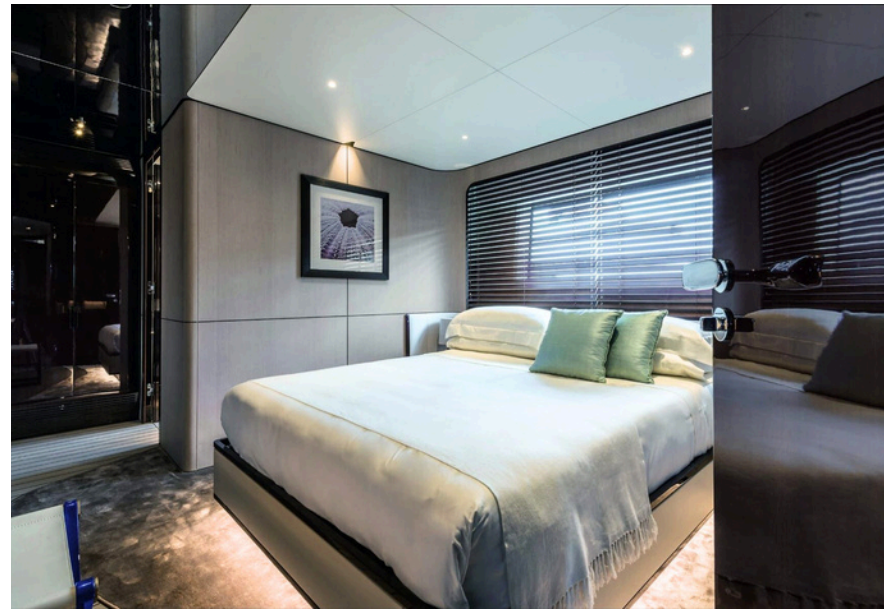
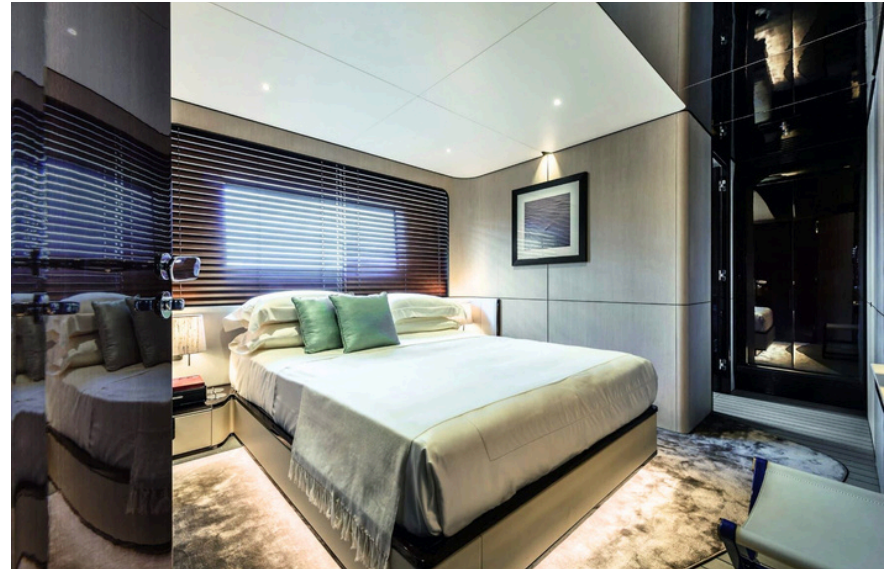
\*Catalog photo

Master cabin



\*Catalog photo

Guest cabins



\*Catalog photo

## Specs

### **SPECIFICATIONS**

- LOA: 35 m
- LWL (at full load): 28.5 m
- Beam max: 7.50m
- Draft: 1.91 m
- Displacement (at full load): 154t

### **ENGINES**

- 2x2400 HP (1790kw) MTU 16V 2000 M93

### **PERFORMANCE**

- Max speed up to 26kn
- Cruising speed 21kn

### **ACCOMODATION**

- Cabins: 5 + 4 crew
- Berth: 10 + 6 crew
- Heads: 6 + 4 crew

### **SPECIAL FEATURES**

- Electric Zero Speed Stabilizers
- Audio-Video package
- Controlled with iPad
- Steam Shower in Master Cabin
- Bow Jacuzzi
- Bar + Upgraded BBQ on Flybridge
- Hard Top with Sliding soft Top on Flybridge

## Specs

### **GENERAL**

- RINA pleasure classification
- Sundeck with teak flooring
- Stem thruster
- Soundproof insulation between saloon and engine room
- Soundproof insulation in master cabin
- Upgraded A/C in saloon and master cabin

### **TENDER & JET SKI**

- Tender installation on board
- Tender filling station from main fuel tank

### **INTERIOR**

- Oil change system for main engines, gearboxes and generators
- Watermaker IDROMAR (180 l/h)
- Duplex watermaker
- Double Rac or filter for generators
- 2 x folding beds in each guest cabin
- Filler cushion in guest cabin
- Fridge in the lower deck lobby
- Wine cooler in pantry
- Rails for blackout in master cabin
- Washer & dryer
- Marble in heads (STATUARIO)

## Specs

### **EXTERIOR**

- 2 x midship cleats (with fairleads)
- Predisposition for MarQuipt ladder (11 steps) with handrail and installation of the brackets on the hull
- 6 x LED spotlights on aft Flybridge (FLEXA)
- 6 x U- shaped stainless-steel handrails for swim platform
- 6 x underwater lights under swim platform (AQUALUMA)
- Cover for bow sitting area, with 6 poles in carbon fiber
- Teak flooring on all flybridge
- Electric main door in Saloon
- Flybridge bar
- Flybridge sofas
- Shower in beach area
- BBQ in the stb cabinet in flybridge
- Fenders
- Sundeck cover with carbon poles

## Specs

### **ELECTRIC SYSTEMS**

- 2 x Generators KOHLER 70Kw / 50 Hz
- 1 x Glendinning Cablemasters
- Panasonic PABX central unit
- Dimmers for external lights (cockpit & flybridge)
- Automatic parallel between generators
- Internal switches with integrated led

### **ELECTRONICS & NAVIGATION**

- Navigation package (FURUNO -Gold)
- Touchscreen alarms and boat management in crew area and captain's cabin
- AIS

### **VIDEO-TV-STEREO**

- Fixed video camera in aft cockpit and both side decks + Zooming video camera in engine room (connected to navigation display)
- 2 x fixed cameras for mooring purposes (connected to navigation display)
- SAT TV predisposition (KVH cables)
- SAT COM predisposition (KVH cables)
- A/V package (Platinum version)
- 2 x speakers in beach area

## ***Disclaimer***

All speeds, measurements, capacities, consumptions, etc. may be approximate or estimated. Specifications provided for information only. Data was obtained from sources believed to be reliable and is not guaranteed by owner or brokers. Buyer assumes the responsibility to ascertain the correctness of all data contained herein and otherwise provided and must instruct his agent and surveyors to confirm all details for accuracy prior to purchase. Subject to prior sale, price and inventory change, or withdrawal from market without notice.